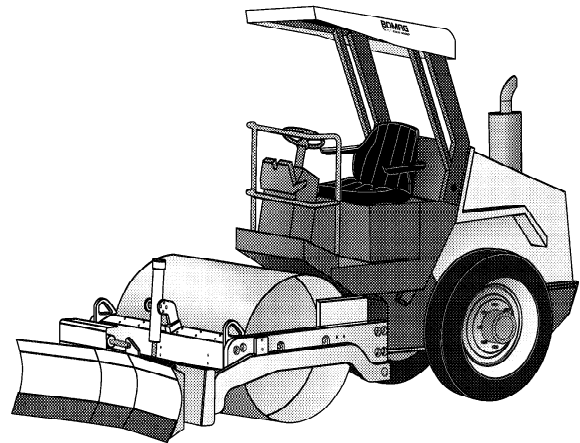


SINGLE DRUM VIBRATORY ROLLERS BW 124 DH, BW 124 PDH, BW 124 PDB (T)

PERFORMANCE DATA



Machine type	Compaction output (m ³ /h)			
	Rock fill	Gravel, sand	Mixed soil	Silt, clay
BW 124 DH	-	105-210	75-150	40-90
BW 124 PDH	-	105-210	75-150	50-100

Machine type	Compacted layer thickness (m)			
	Rock fill	Gravel, sand	Mixed soil	Silt, clay
BW 124 DH	-	0,35	0,25	0,15
BW 124 PDH	-	0,35	0,25	0,20

Technical Data

Shipping dimensions in m3

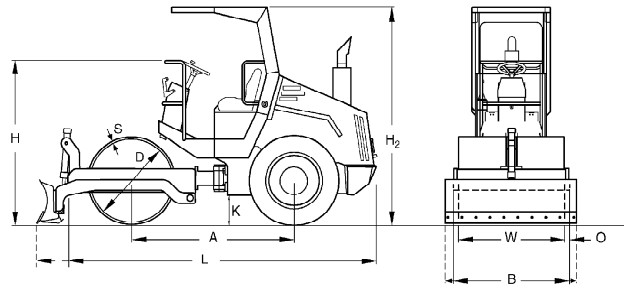
	without ROPS	with ROPS
BW 124 DH	8,119	10,844
BW 124 PDH	8,119	10,844
BW 124 PDB (T)	10,931	14,600

Standard

- Hydrostatic travel and vibration drive
- Double pump system for travel drive
- Rear axle with twin spring accumulator brakes
- Differential lock
- Hydrostatic articulated steering
- Contact scrapers
- Operating/Control Equipment
 - Hour meter
 - Charge control
 - Parking brake
 - Engine oil pressure
 - Engine temperature
 - air cleaner pollution
 - Fuel level indicator
- Warning horn
- Transport lashing and lifting points front/rear
- Lockable anti vandal dashboard protection
- Back-up alarm
- Emergency stop button
- ROPS/FOPS with safety belt
- Working lights
- Seat contact switch

Options

- Dozer blade
- Dozer blade with tilting mechanism
- Dozer blade with swashing facility
- Special painting
- Rotary beacon



Dimensions in mm

	A	B	D	H	H2	K	L	O	S	W
BW 124 DH	1805	1310	960	1850	2471	320	3350	55	15	1200
BW 124 PDH	1805	1310	890	1850	2471	320	3350	55	15	1200
BW 124 PDB (T)	1805	1515	890	1850	2471	320	3900	55	15	1200

Technical Data

	BOMAG BW 124 DH	BOMAG BW 124 PDH	BOMAG BW 124 PDB (T)
Weights			
Grossweight	kg 3.850	3.900	3.900
Operating weight CECE	kg 3.300	3.350	3.880
Axle load, drum / wheels CECE	kg 1.600/1.700	1.650/1.700	1.950/1.730
Static linear load CECE	kg/cm 13,3		

Dimensions

Working width	mm 1.200	1.200	1.200
Track radius, inner	mm 2.240	2.240	2.240

Driving Characteristics

Speed (1)	km/h 0- 9,0	0- 9,0	0- 9,0
Max. gradeability without/with vibr.	% 55/55	55/55	55/55

Drive

Engine manufacturer	Deutz	Deutz	Deutz
Type	D 2011 L3i	D 2011 L3i	D 2011 L3i
Cooling	Air - oil	Air - oil	Air - oil
Number of cylinders	3	3	3
Performance ISO 3046	kW 33	33	33
Performance SAE J 1995	hp 45	45	45
Speed	min-1 2.500	2.500	2.500
Fuel	diesel	diesel	diesel
Electric equipment	V 12	12	12
Drive system	hydrost.	hydrost.	hydrost.
Drum driven	standard	standard	standard

Drums and Tyres

Tyre size	9.5-24 4PR	9.5-24	9.5-24
Number of pad feet		70	70
Area of one pad foot	cm2	81	81
Height of pad feet	mm	55	55

Dozer Blade

Width / height	mm		1.515/500
Height adjustment over ground level	mm		405
Height adjustment below ground level	mm		180
Swivelling angle for tilt +/-	grad		22

Brakes

Service brake	hydrost.	hydrost.	hydrost.
Parking brake	hydromec.	hydromec.	hydromec.

Steering

Steering system	oscil.artic.	oscil.artic.	oscil.artic.
Steering method	hydrost.	hydrost.	hydrost.
Steering / oscillating angle +/-	grad 35/12	35/12	35/12

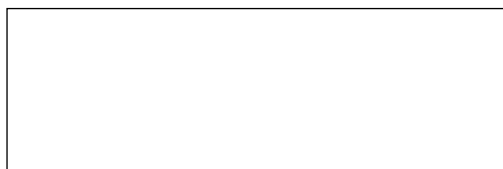
Exciter system

Drive system	hydrost.	hydrost.	hydrost.
Frequency	Hz 41/41	41/41	41/41
Amplitude	mm 1,70/0,85	1,60/0,80	1,60/0,80
Centrifugal force	kN 85/43	85/43	85/43

Capacities

Fuel	l 60	60	60
------------	------	----	----

Technical modifications reserved. Machines may be shown with options.



BOMAG
Hellerwald
D-56154 Boppard
P.O. Box 5162
Tel. (0)6742 - 1000
Fax (0)6742 - 3090
Fax (0)6742 - 3090

BOMAG
FAYAT GROUP